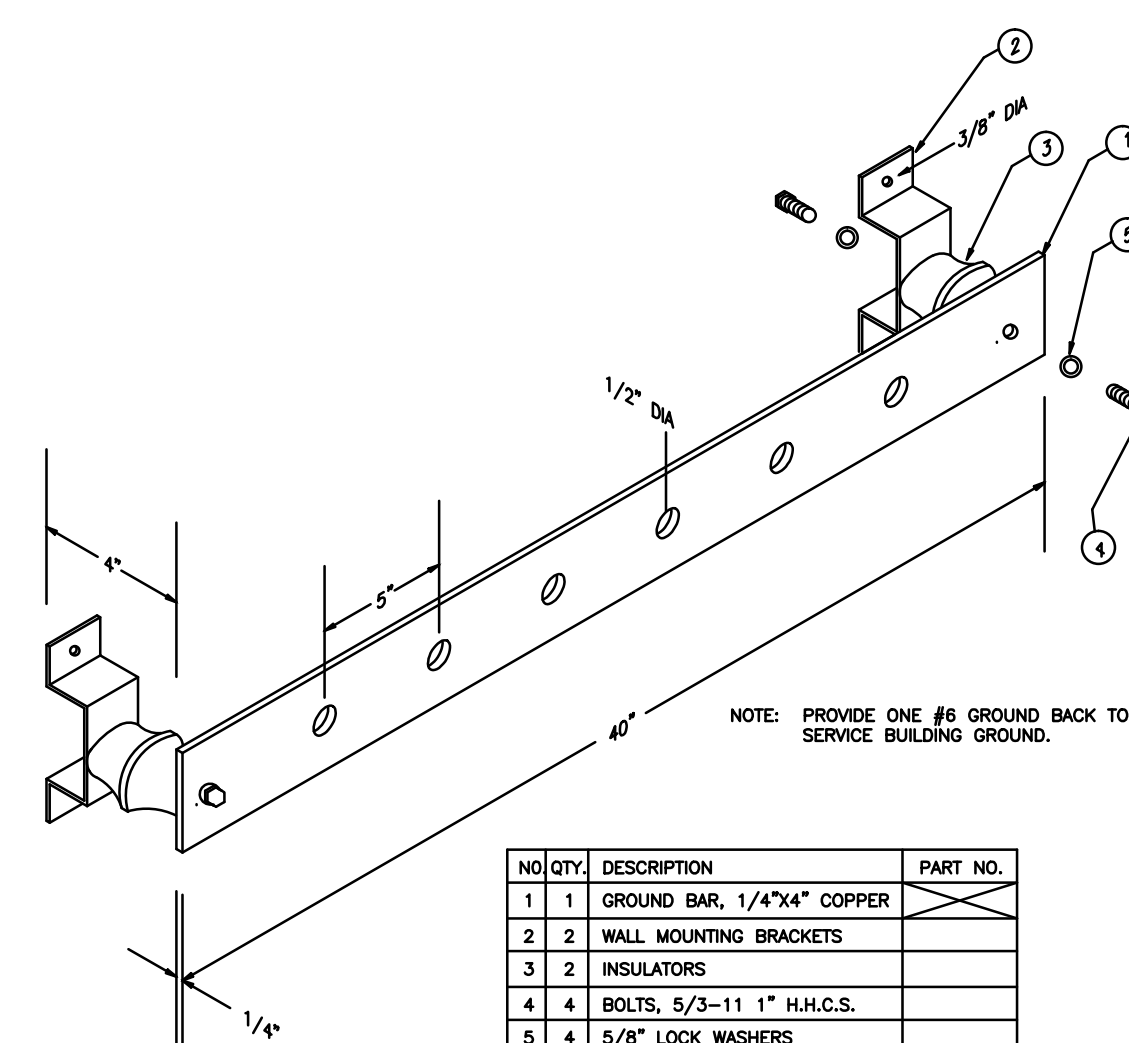


BUILDING GROUNDING/BONDING AND LIGHTNING PROTECTION PLAN

SCALE: 1/32" = 1'-0"

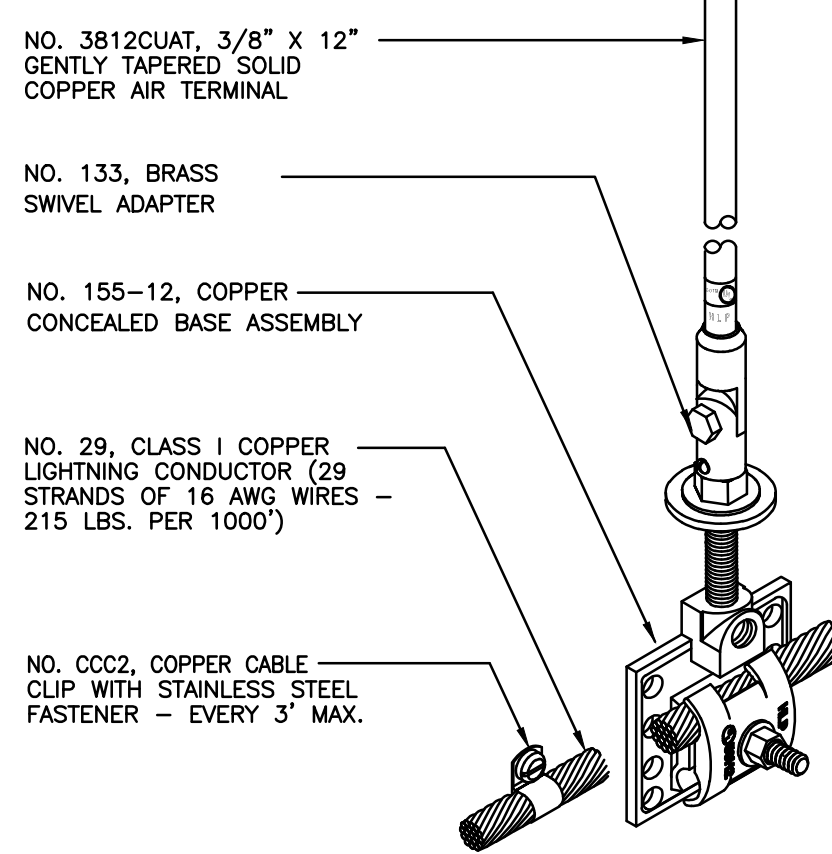


GROUND BAR DETAIL

NTS

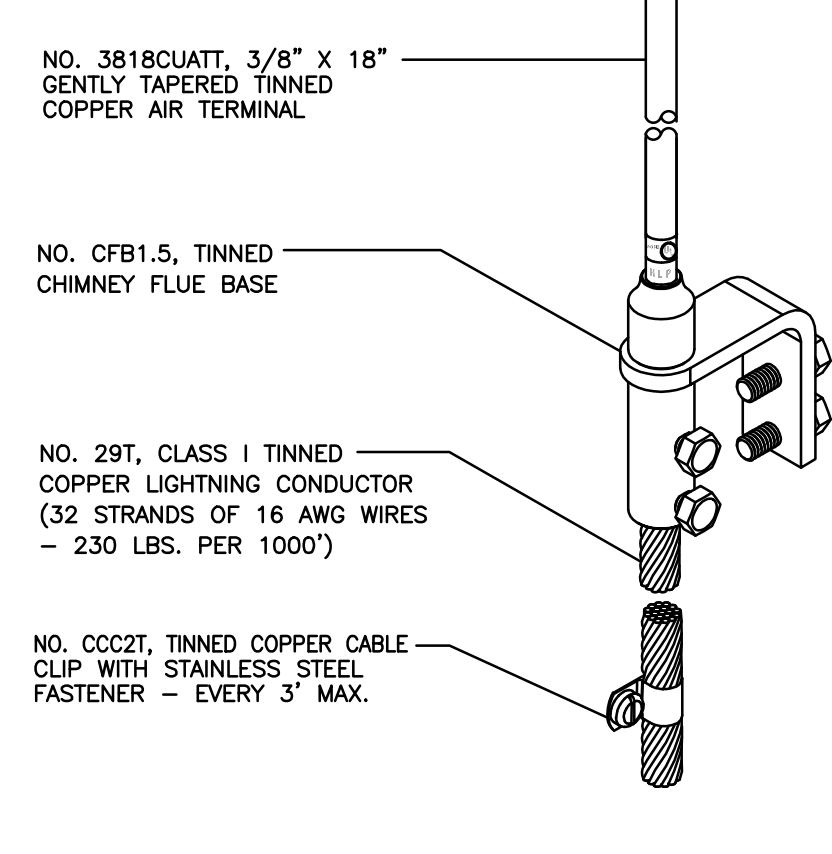
NO.	QTY.	DESCRIPTION	PART NO.
1	1	GROUND BAR, 1/4"x1/4" COPPER	
2	2	WALL MOUNTING BRACKETS	
3	2	INSULATORS	
4	4	BOLTS, 5/32-11 1" H.K.C.S.	
5	4	5/8" LOCK WASHERS	

PART NUMBERS FOR THE GROUND BAR SHOWN REFER TO MECHANICAL INSTRUMENT UNIT X3000. SEE SPEC.



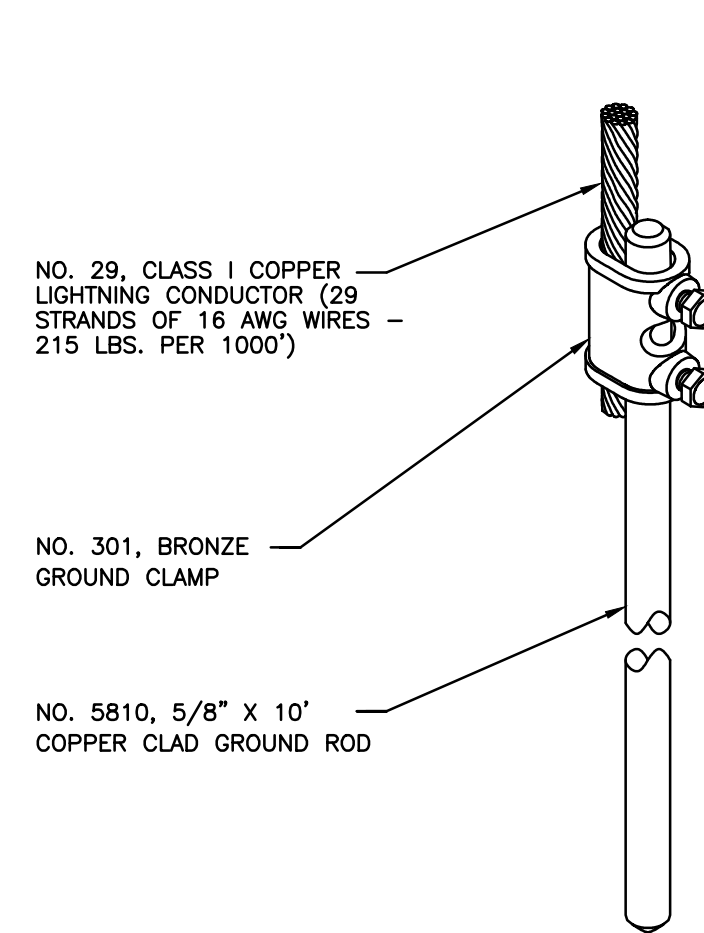
AIR TERMINAL DETAIL "A & C"

NTS



AIR TERMINAL DETAIL "B"

NTS

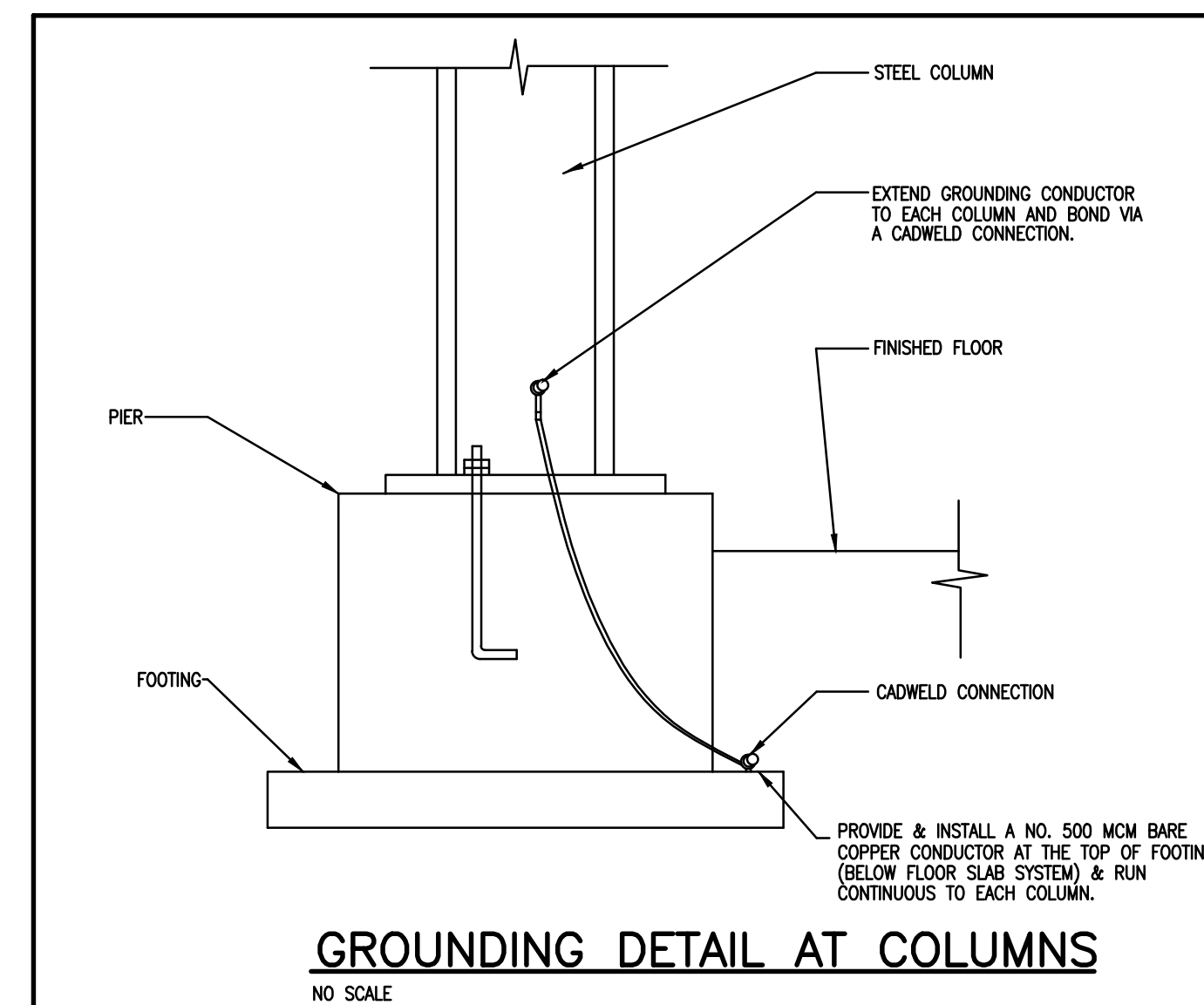


GROUND ROD DETAIL "G"

NTS

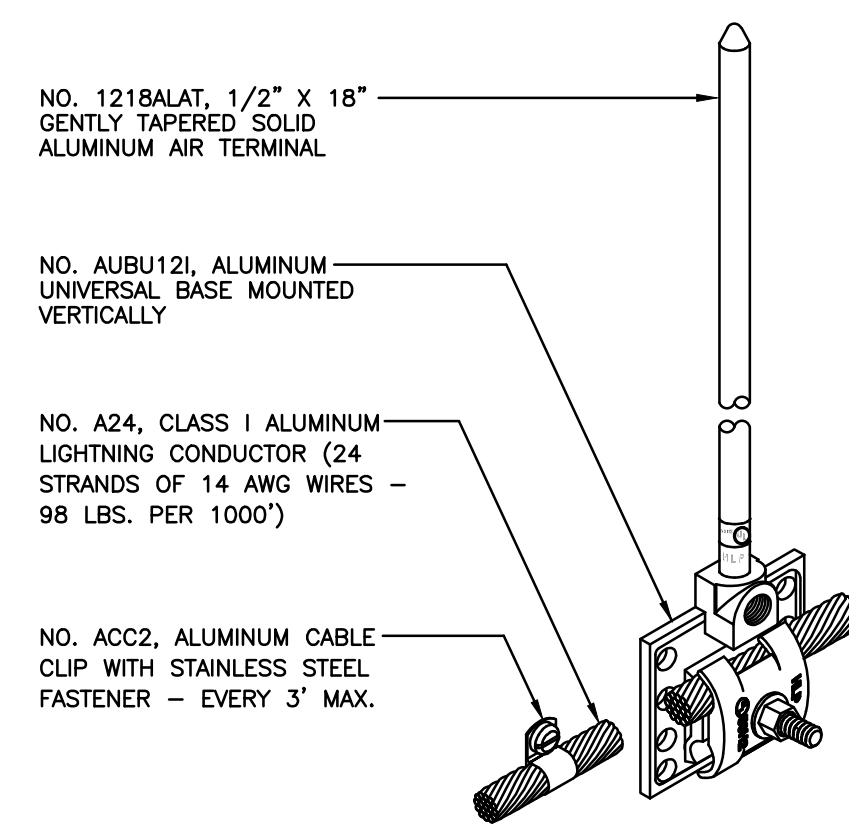
SHEET NOTES:

1. BASE GROUND WIRE NO. 500 MCM BARE COPPER BONDED TO EACH COLUMN AS SHOWN. SEE GROUNDING DETAIL AT COLUMNS, THIS SHEET.
2. (3)-5/8" DIA. X 10'-0" LONG DRIVEN GROUND RODS.
3. GROUNDING OF TRANSFORMERS BY KENTUCKY UTILITIES COMPANY.
4. SEPARATE GROUND LOOP FOR LIGHTNING PROTECTION SYSTEM. PROVIDE GROUND RODS AS REQUIRED.
5. PROVIDE DOWN CONDUCTORS AT A MINIMUM OF 100' INTERVALS. PROVIDE TWO 3/4" X 10' DRIVEN GROUND RODS AT EACH DOWN CONDUCTOR.
6. PROVIDE GROUND TO EQUIPMENT AT APPROPRIATE POINT. CONFIRM EXACT LOCATION WITH EQUIPMENT MANUFACTURER. PROVIDE GROUNDING CONDUCTOR AND BONDING AS NECESSARY. FEED FROM NEAREST GROUNDING BAR, IDENTIFIED BY TAG NOTE #6.
7. PROVIDE SEPARATE DOWN CONDUCTOR FOR EACH SILO.
8. PROVIDE GROUND BAR INSIDE OF TRENCH AT APPROPRIATE LOCATION. COORDINATE WITH OWNER FOR EXACT LOCATION. PROVIDE GROUNDING CONDUCTOR AND BONDING AS NECESSARY.
9. INDEPENDENT GROUNDING ELECTRODE FOR MESUREX MACHINE.



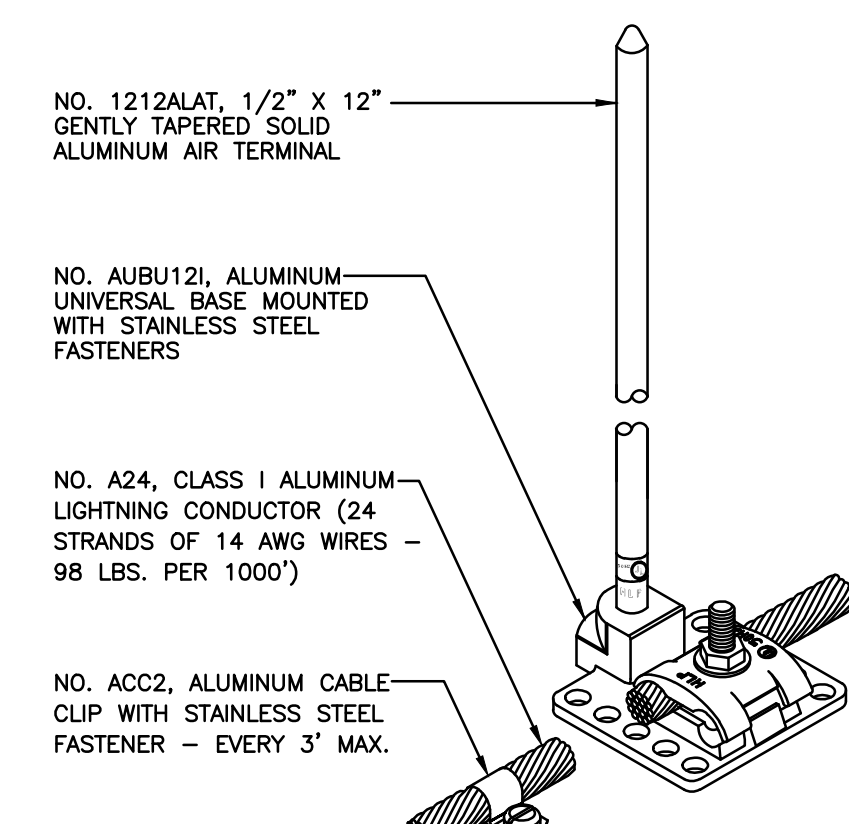
GROUNDING DETAIL AT COLUMNS

NO SCALE



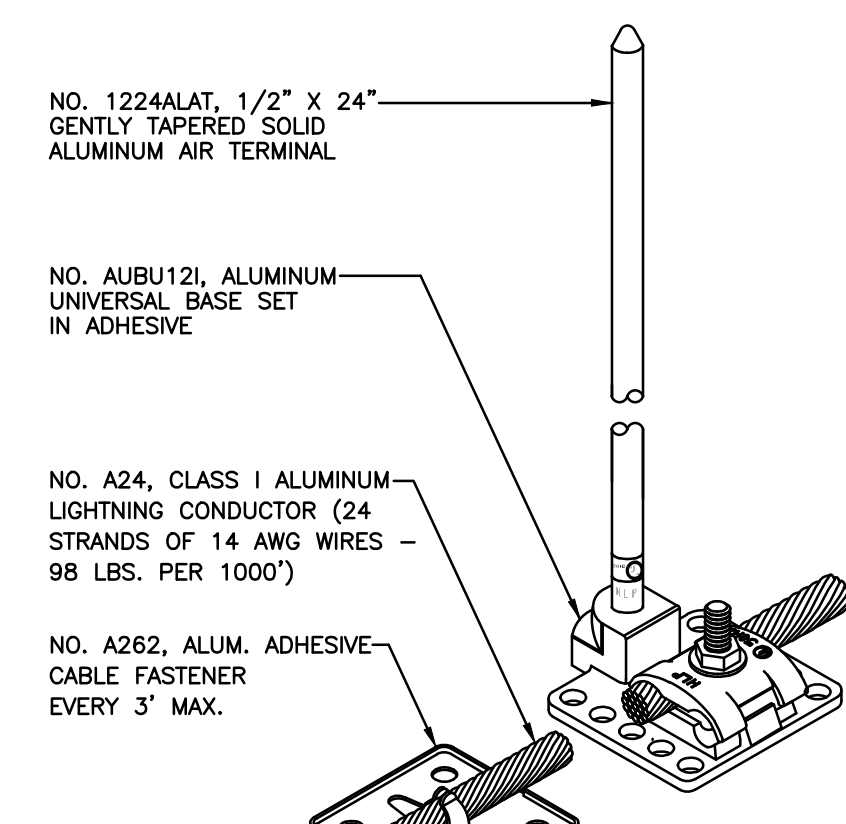
AIR TERMINAL DETAIL "A"

NTS



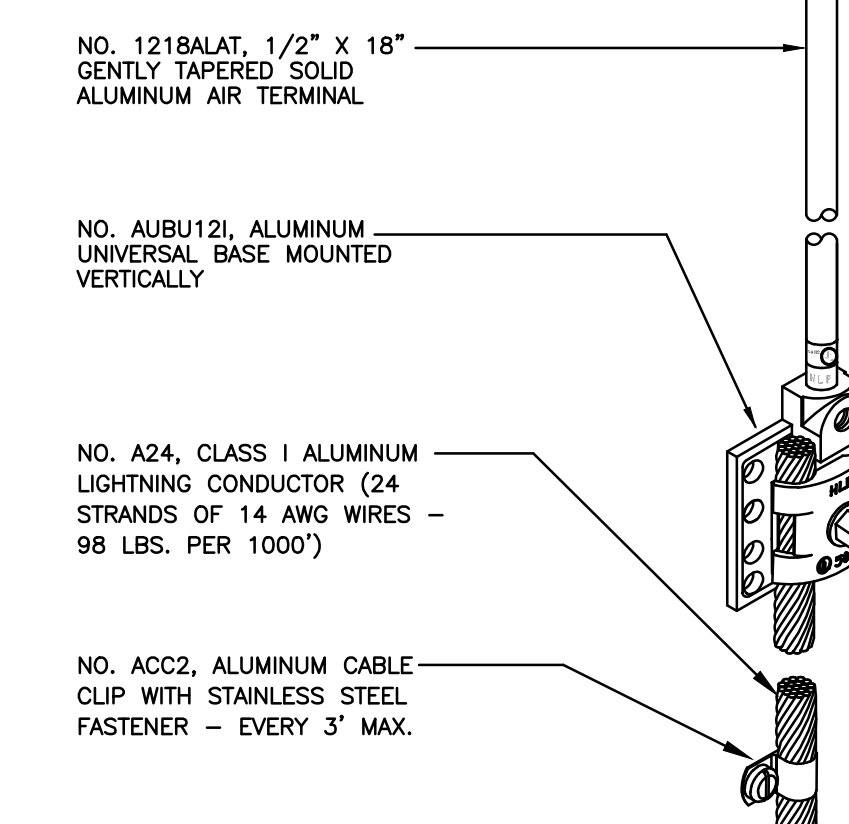
AIR TERMINAL DETAIL "B"

NTS



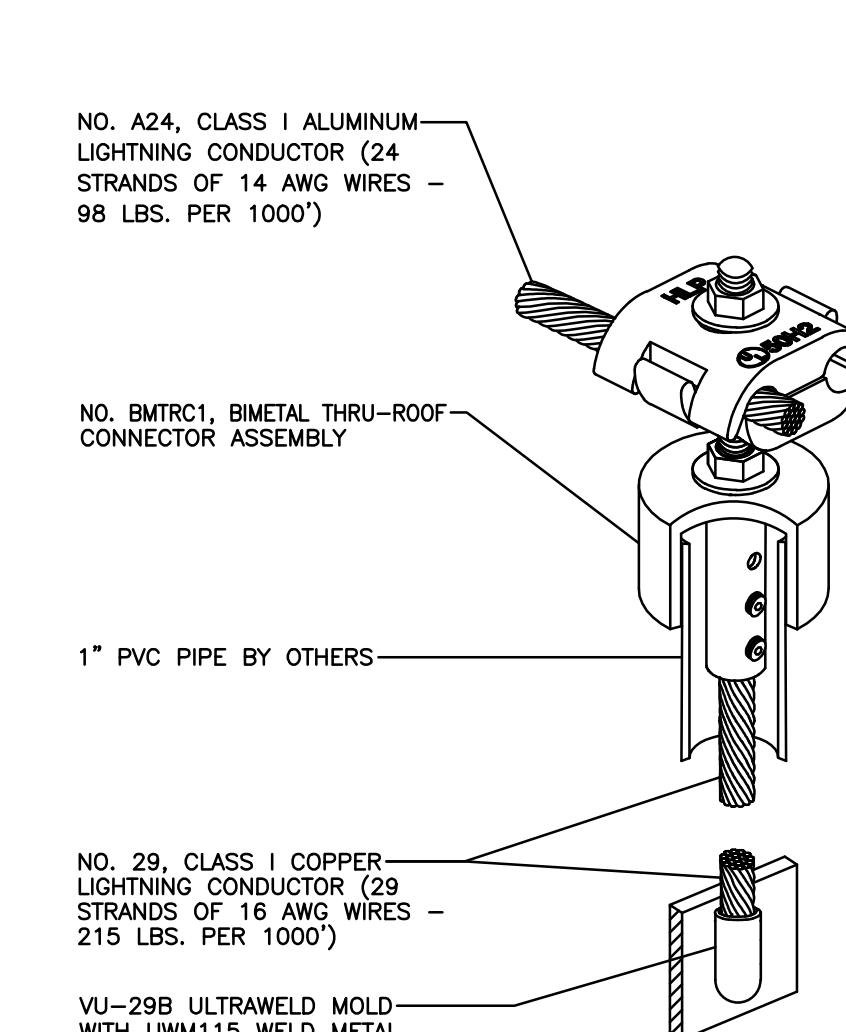
AIR TERMINAL DETAIL "C"

NTS



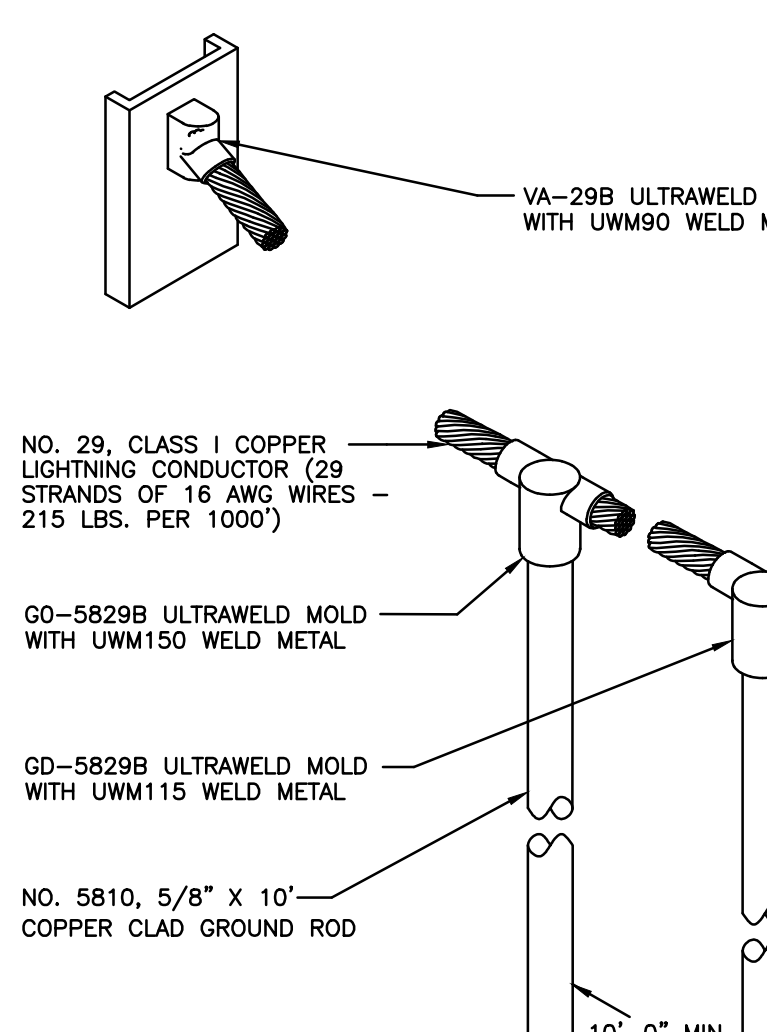
AIR TERMINAL DETAIL "D"

NTS



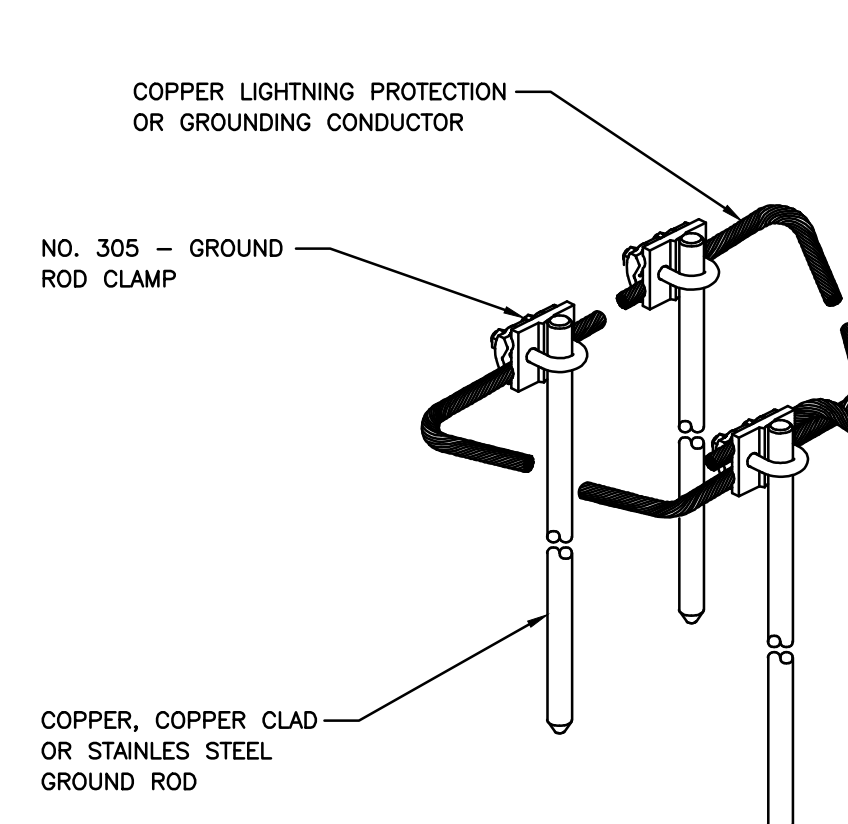
THRU ROOF DETAIL "T"

NTS



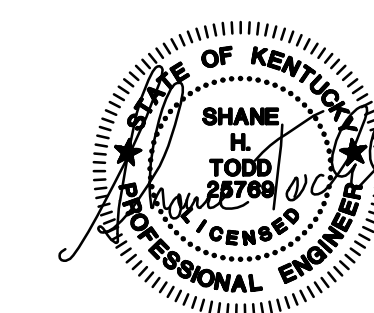
GROUND ROD DETAIL "G"

NTS



305-DELTA GROUND ROD DETAIL

NTS



DATE	REVISION	BY
NOV. 11, 2011	VALUE ENGINEERING RE-DESIGN DOCUMENT	

PROJECT NO. 8529-02
DESIGNED BY LND
DRAWN BY LND
CHECKED BY SHT
REVIEWED BY SHT
DATE JULY 2011
SCALE AS NOTED